



**Department of the Environment**

---

## **The Revised Total Coliform Rule (RTCR)**

***A New Rule for All Public Drinking Water Systems***

**Mike McMahon**

Natural Resource Planner

Maryland Department of the Environment

Water Supply Program





## **Department of the Environment**

### **Topics**

- ❖ Regulations and the Labs
- ❖ RTCR Monitoring
- ❖ RTCR Compliance
- ❖ The Ground Water Rule
- ❖ Data Submission to MDE - WSP



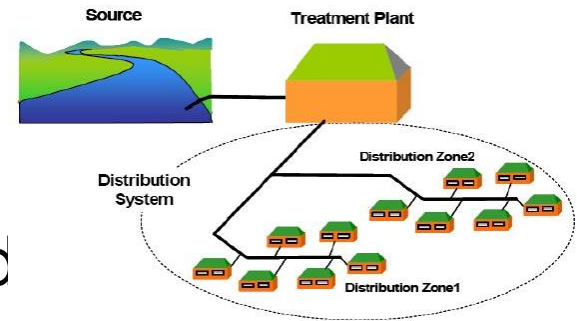
## **Department of the Environment**

### **Regulations and the Labs**

- Definitions and Demographics
- Overall Monitoring Requirements

# Definitions

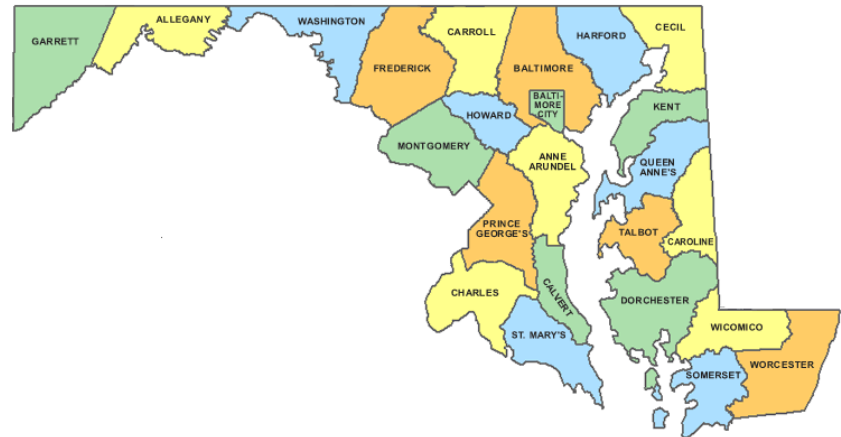
- Private vs. Public (PWS)\*  
25 people present, at least 60 d
- Community (CWS)  
15 residential connx or 25 residents “year-round”
- Noncommunity  
Nontransient (NTNC) vs. Transient (TNC)
  - NTNC - 25 same people, 4 hour/day 4 days/week, 6 months or more
  - TNC - 25 present for at least 60 days (not necessarily same people) [*\*minimum PWS*]



# Maryland PWS Demographics

Total of MD PWS = 3346

- CWS = 474
- NCWS = 2872
  - NTNC = 538
  - TNC = 2334
    - Delegated = 1716
    - Non-delegated = 618



# Overall Monitoring Requirements

## Transient Noncommunity

- Only bacteriological,  $\text{NO}_2/\text{NO}_3$ ,  $\text{Cl}_2$  Residual
- Turbidity for SW or GWUDI Systems

## Nontransient Noncommunity

- Everything but fluoride
- No DBP for systems not disinfecting (CWS)



## Overall Monitoring Requirements [cont'd]

### Frequencies for TNC

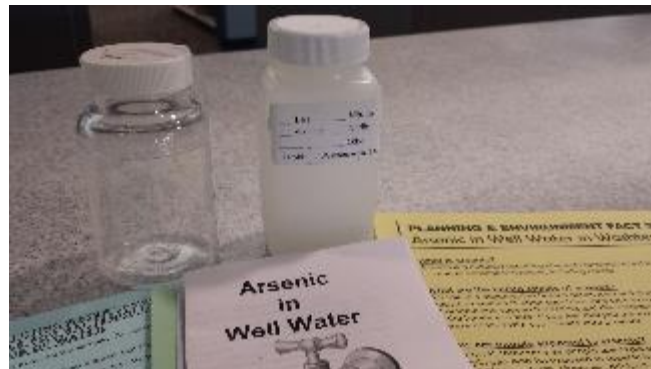
- Bacteriological - Q, A, or (M) with  $\text{Cl}_2$  residual
- $\text{NO}_2$  - once
- $\text{NO}_3$  – A or Q (specified quarter option)
- Turbidity – daily or more frequently



## Overall Monitoring Requirements [cont'd]

### Frequencies for CWS & NTNC

- Bacteriological – Q or M with  $\text{Cl}_2$  Residual
- Metals – full panel 3 → 9 years
- SOC & VOC – by state 3 to 9 years (SW >)
- DBP & Pb/Cu – schedules based on testing
- As,  $\text{NO}_3$ , & Gross -  $\alpha$  – most likely increased





## RTCR Monitoring

- Background
- Laboratory Testing
- Monitoring Requirements
- Bacteriological Sample Siting Plan
- Confirmation

# Coliform Bacteria

- Total Coliform (TC)
  - Common microbes
  - Not threat itself
  - Potential pathogens
  - Disinfection residual
- *E. coli* (*Escherichia coli*)
  - Species of TC
  - Pathogenic strains
  - Fecal waste
  - Mammals & birds



# Sources of Microbial Contamination

- Source water
  - Soil runoff (agricultural)
  - Sewer and septic
- Treatment & storage
  - Open/faulty storage
  - Damage (accidental/vandalism)
- Distribution system issues



# Revised Total Coliform Rule (RTCR)

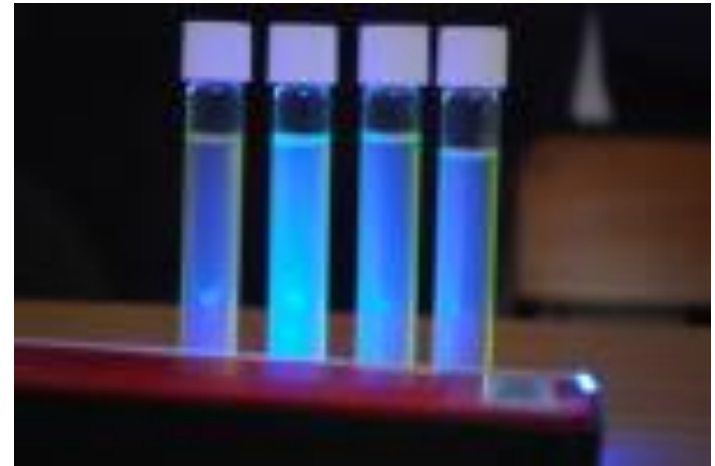
- TCR Promulgated 1989
- RTCR effective April 1, 2016
- Changes [40 CFR 141(§) – Subpart Y]
  - Fecal → *E. coli*
  - TC Violation → Assessments
  - Fewer Samples
  - “Potential pathways of contamination...”



# Laboratory Testing

## Procedures

- Volume of 100 mL
- Incubation max. 30 hrs
- Absence/Presence
- TC & EC
- Enzyme-based



## Laboratory Testing [cont'd]

### Colilert Method Issues

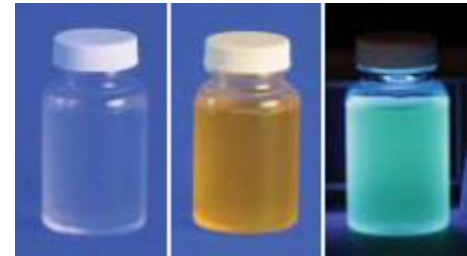
- Listing the inferences (ATCC) in SOP invalidates
- No protocol for (positives) sample disposal
- Missing start and finish incubation date/time



## Laboratory Testing [cont'd]

### General Problems

- Temperature records
  - o Outside required range
  - o Missing notations
  - o Corrective actions not documented
- Procs./prots. missing in QA manual or SOPs
- Annual reviews of QA manuals and SOPs
- Potential cross-contamination during storage





# Monitoring Requirements

## General Requirements

- Routines by population
- 3 repeats per routine
- Collect minimum
- 3 next-month routines?
- Integrated with GWR
- Routine Frequency
  - Community: monthly (rarely Q)
  - Noncommunity: quarterly (TNC to A)





# Monitoring Requirements

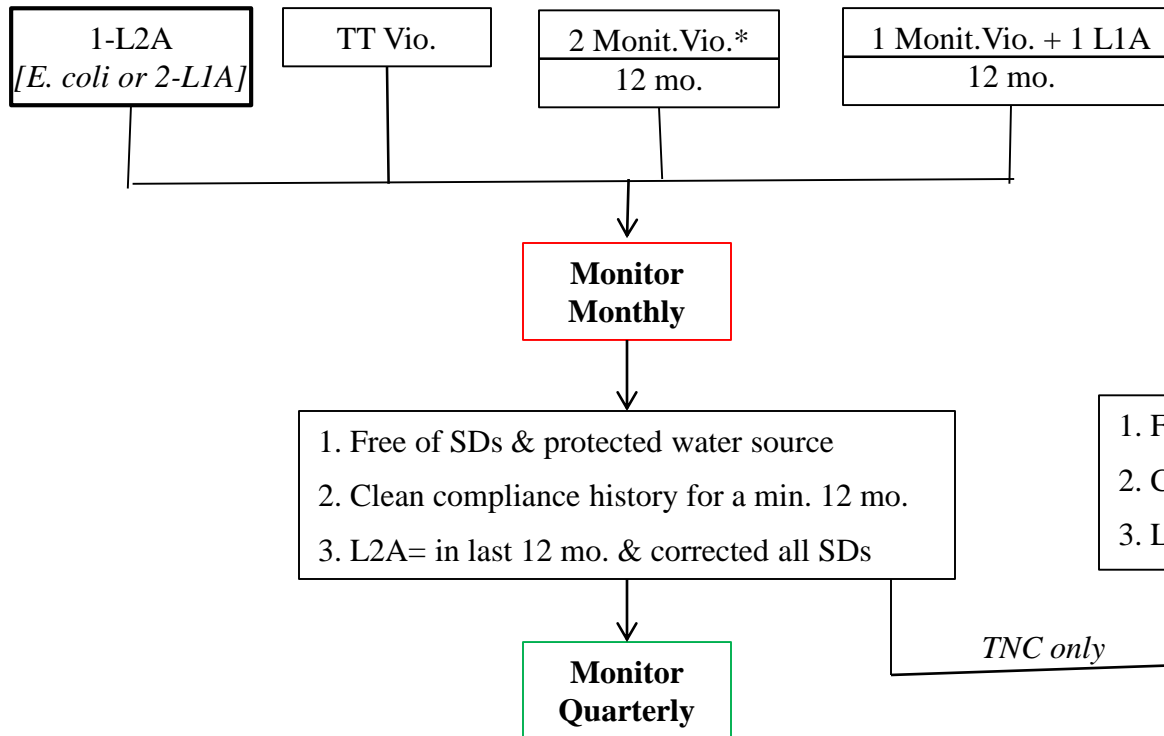
- Seasonal Systems  
Site-specific BSSP  
Monitoring timing -  
*highest demand  
or vulnerability*
- Start-up procedure
  - Sample prior to serving public
  - Sample during peak visitors
  - Exempt if pressurized year-round



# Monitoring Frequency Requirements

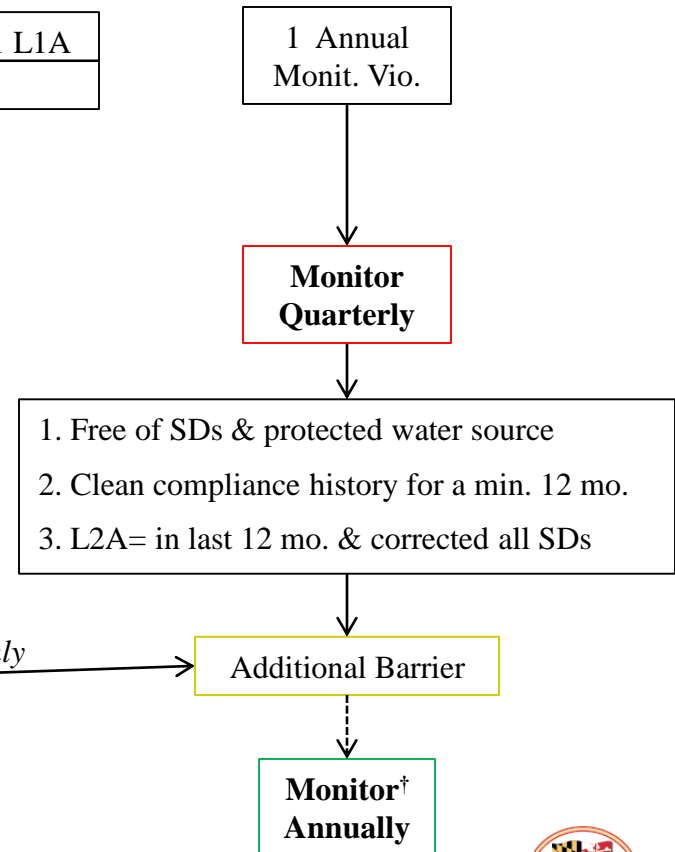
## NTNC or TNC

*Presently on Quarterly or Annual Monitoring*



## TNC only

*Presently on Annual Monitoring*



\* For annual systems, 2 consecutive annual monitoring violations.

† Required annual site assessment.

SD=Sanitary Defects; L1A=Level 1 Assessment; L2A=Level 2 Assessment

## Make-up Samples

- Quarterly only
- Extra routine(s) Q after sample missed
- Collect additional sample ASAP in current monitoring period
- A 2nd sample, a following week, for current monitoring period routine
- System remains on Q, but system still receives a monitoring violation



# Bacteriological Sample Siting Plan (BSSP)

- Representative of distribution
- Alternative sample locations
- A & Q: 3 next-month routines
- M: 0 additional next-month routines



## ***E. coli* Confirmation**

*E. coli* present, notify State by the EoB *same day notified*

- If TC+, must analyze for *EC*
- Forgo, assume EC+

*E. coli* [Acute] MCL  
(*Maximum Contaminant Level*)

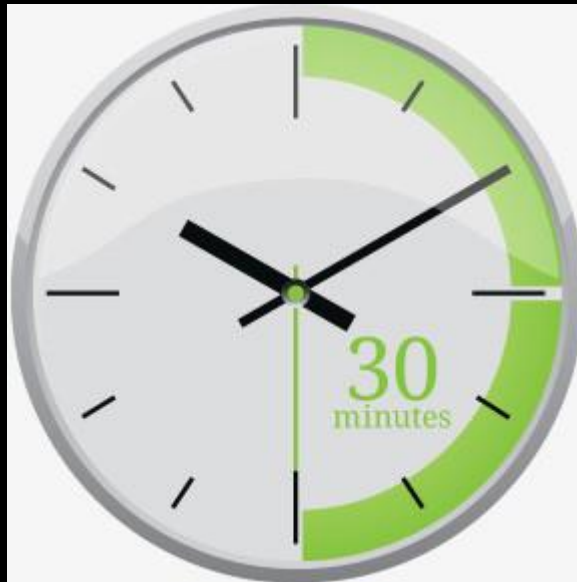
- Failure to collect all repeats after a EC+
- EC+  $\leftarrow$  TC+; TC+  $\leftarrow$  EC+
- Failure to test for *E. coli*





Questions so far...?

# BREAK



## RTCR Compliance

- Treatment Technique Trigger
- Assessments
- Sanitary Defects
- Violations



## Treatment Technique Trigger (TTT)

- Level 1 TTT (TC – MCL)
  - 2 or > TC+ same mo.,  
or >5%, if 40 +/-month
  - Failure, ALL SMR, TC+
- Level 2 TTT
  - *E. coli* MCL violation
  - 2<sup>nd</sup> L1 TTT, rolling 12-mo.  
(unless id'd & corrected 1st Level 1 cause)



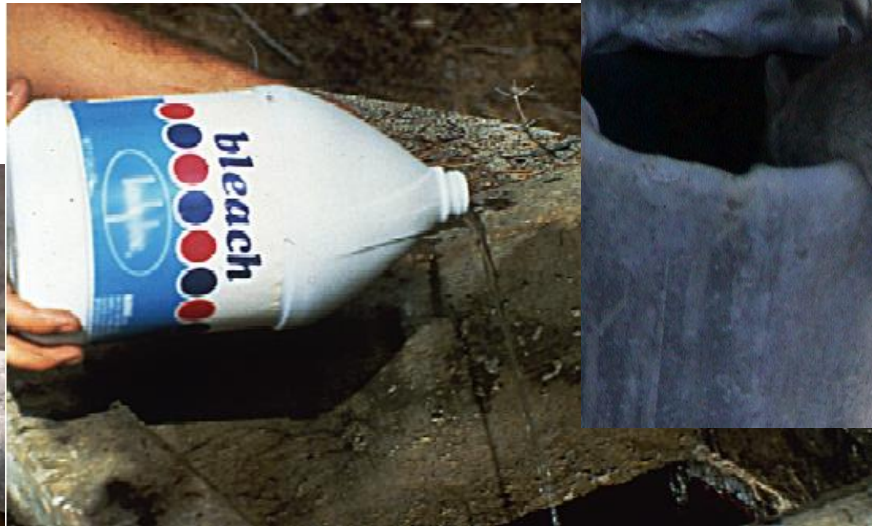
# Assessment Requirements

- “Systems ensures...”
- Level 1 – “self”
  - System completes check list
  - Report 30 days (+) *corrective action*
  - No SD reported?
- Level 2 Assessment - State
  - Same as above, but covering more detail



## Sanitary Defects (SD)

“A defect that could provide a pathway of entry for microbial contamination into the distribution system, or that is indicative of a failure or imminent failure in a barrier that is already in place”



## Invalidations

- Specifics in RTCR
- *E. coli* & TTT
- O/S bibs!\$!\$!
- Documentation: approved & signed
  - Site visit by end next month
  - Determine why the sample was TC+
  - Corrective action by end next month





# Violations

Acute [Tier 1 PN]

- Notify State by EoB
- PN within 24 hrs
- State requirements
- “Boil Water” notice or alternative water supply
- Small systems, deliver or post



## Violations [cont'd]

### Treatment Technique Violation [Tier 2]

- Failure to conduct assessment or start-up
- Notify State by end of next business day
- Public Notice  
No later than 30 days
- Small systems deliver to each residence (posted)



## Violations [cont'd]

- Monitoring [Tier 3]
  - Insufficient routines
  - Insufficient repeats
  - Failure to analyze for *E. coli*
- Reporting [Tier 3]
  - Late monitoring report
  - Late/absent assessment
  - Failure to report EC+ by EoB



*Consumer Confidence Report (CCR)*

## In Summary: What's new in the RTCR?

- *E. coli only* – no fecal method or violation
- Requirements for invalidations
- Alternative repeat monitoring
- 3 SMR per Sample >> TTT
- Level 1 & 2 Assessments
- Violations: No TC+; new TT & M/R separate





# The Ground Water Rule

- 4-log Inactivation
- Triggered Source Water Monitoring
- Continued Source Water Monitoring

## Ground Water Rule (GWR)

4-log Disinfection

- Virus Inactivation
- 99.99%
- Contact Time (CT)
- GWUDI & Surface Water Systems



## Ground Water Rule (GWR) [cont'd]

### Triggered Source Water Monitoring TSWM)

- Before all treatment
- Back-flow prevention
- By-pass technique
- Test each well, *E. coli*
- Invalid:  $\text{Cl}_2$  residual  
or no  $\text{Cl}_2$  testing
- NO treatment, use sample nearest source



## Ground Water Rule (GWR) [cont'd]

If TSWM tests for *E. coli*

- Tier 1 PN!  
Not a Violation,  
if treated water is EC-
- Repeat TSWM  
5 samples
- Repeat TSWM EC+,  
contact MDE
- Ground Water Rule Monitoring Report



## Data Submission to MDE - WSP

- Bacteriological Reporting Form
- Electronic Data Submission

# Completing the Bacteriological Form

OFFICE USE ONLY

Submit report to: **MARYLAND DEPARTMENT OF THE ENVIRONMENT**  
**WATER SUPPLY PROGRAM**  
 1800 Washington Blvd, Suite 450 Baltimore, MD 21230-1708  
 (410) 537-3729 or (800) 633-6101 ext. 3729 [www.mde.maryland.gov](http://www.mde.maryland.gov)

**BACTERIOLOGICAL MONITORING REPORT FORM**

*This report must be received by the 10<sup>th</sup> day of each succeeding month in which samples were collected. Results of invalidated samples are not to be included on this report form.*

OFFICE USE ONLY

1. ☐ ACCEPTED

2. ☐ REJECTED

3. ☐ ENTERED

**System Name:** \_\_\_\_\_

**PWSID:** \_\_\_\_\_ **Analysis Method(s):** \_\_\_\_\_

**Laboratory Name:** \_\_\_\_\_ **Lab ID#:** \_\_\_\_\_

**Sampler(s):** \_\_\_\_\_ **Sampler ID:** \_\_\_\_\_

**Month of Collection:** Jan ☐ Feb ☐ Mar ☐ Apr ☐ May ☐ Jun ☐ Jul ☐ Aug ☐ Sep ☐ Oct ☐ Nov ☐ Dec ☐ **Year:** \_\_\_\_\_

1) **Population:** \_\_\_\_\_ **Sampling Frequency:** ☐ Monthly ☐ Quarterly **Required number of routine samples:** \_\_\_\_\_

2) **Number of Negative Routines Collected & Analyzed:** \_\_\_\_\_

→ List all routine positive and all repeat coliform results in the table on page 2.

3) **Percentage of Samples Total Coliform Positive:** (only if 40 or more samples were collected in reported month)  

$$\frac{(\text{number of positive routines} + \text{positive repeats})}{(\text{total number of routines} + \text{repeats})} \times 100 \rightarrow$$
 \_\_\_\_\_

4) **Were any routine E. coli positive samples followed by (same month) repeat coliform positive samples?**  
 If YES, this is an acute violation. Immediate Public Notification required! Contact MDE. → Yes ☐ No ☐

5) **Were all sources active the day of the routine positive(s) Surface Water or GWUDI?** → Yes ☐ No ☐  
 If NO, source water samples must be analyzed: (a) & (b) below and the GWR Reporting Form must be completed.

a. **Total Number of Source Water Samples Collected:** \_\_\_\_\_

b. **Number of Source Water Samples that are E. coli positive:** \_\_\_\_\_

6) **Mean Field Chlorine Residual Level for Month of Collection:** milligrams per liter (mg/L)  
 Systems over 3,300 persons must complete and submit the Disinfection Residual Monitoring Form quarterly.  
 If the chlorine residual exceeded 4.0 mg/L, this may be a violation. → \_\_\_\_\_

7) **Original microbiological Laboratory report sheets on file and available for inspection?** → Yes ☐ No ☐

*I do hereby affirm that this record contains no willful misrepresentations or falsifications and that this information given by me is true and complete to the best of my knowledge and belief.*

Please print: \_\_\_\_\_

Signature: \_\_\_\_\_ Date: \_\_\_\_\_

Section Break (Continuous)

MDE WMA COM 006A → TTY Users 1-800-735-2258 → Revised 09/24/2015



## Completing the Bacteriological Form [cont'd]

Page 2

PWSID

### Positive Bacteriological Samples Results

*This table should be completed, with original positive and all repeats, when there are positive bacteriological samples for the monitoring period.*

[illegible]

<sup>1</sup>Sample Type: RT = Routine; RP= Repeat; TG = Triggered for Ground Water Rule

<sup>2</sup>Repeat Location: OR = original sample location; UP = upstream within 5 connections of OR; DN = downstream within 5 connections of OR; OT = other

<sup>3</sup>TC (total coliform)/FC (fecal coliform)/EC (E.coli): The (A)bsence [negative (-)] and (P)resence [positive (+)] indicators; used to indicate the existence of coliform in the sample.

**Count: (optional)** This field is only available if total coliform is found to be present.

<sup>4</sup>Rejection: For a TCR result that may be invalidated. TBD by the State or laboratory.

Rejection codes: TINTC - Too numerous to count CNFG - Confluent Growth TCNG - Turbid culture, no gas

# Electronic Data Submission

- SDWIS – state
- EEMS – “kaput”
- Files Submission
  - XML
  - CVS
- System
  - LIMS, etc.
  - Microsoft Access
  - Microsoft Excel
- Pricing?





# Microsoft Access Data Entry

TC SAMPLES											
<b>System ID:</b>		<input type="text"/>	<b>System Name:</b>		<input type="text"/>					<b>Add System</b>	
Date Collected:		<input type="text"/>	Date Received By Lab:		<input type="text"/>	Analysis Completion Date::		<input type="text" value="00000000"/>	Analysis Completion Time:	<input type="text"/>	
			Sample Collector:			<input type="text"/>			<b>Add Name</b>		
			Sample Purpose:			<input type="text"/>					
			Location Indicator:			<input type="text"/>					
<div style="border: 1px solid black; padding: 5px;"> <p>The EColi Field only needs checked Y for WELLS with ABSENT (A) Coliform, when tests were made for EColi</p> <p>Was WELL tested for EColi, Y or N? <input type="text" value="N"/></p> </div>											
<b>Add/Edit Point</b>											
Point:	Location:	Water Fac Code:	Type:	Time Collected:	Chlorine Res Free:	Total:	Enter Colonies Read or TNTC:	Total Coli:	Fecal/EColi:	Opin:	Lab Sample#:
<input type="text"/>	<input type="text"/>	<input type="text"/>	<input type="text"/>	<input type="text"/>	<input type="text"/>	<input type="text"/>	<input type="text"/>	<input type="text"/>	<input type="text"/>	<input type="text"/>	<input type="text"/>
LT2 Rule ONLY				Colonies Read for EColi:		With Turbidity:					
Coliform Method:		<input type="text" value="9223B-PA"/>	Fecal / EColi Method:		<input type="text" value="9223B-PA"/>		State Notified Date:				
Laboratory Cert. No:		<input type="text" value="IL17524"/>		Reason for Replacement:		<input type="text"/>					
<b>Another Sample - Same Form</b>			<b>New Lab Form</b>			<b>Process Current Record</b>			<b>Close</b>		
Record: 1 of 1 Filtered Search											

## Required Reporting Fields

- Collection date and time (24 hour)
- Laboratory number (unique for year)
- Field chlorine residual (mg/L)
- Sample type
- Repeat location
- (Results) absent or present
- *Count*
- Laboratory rejection code
- Analysis start date and time
- *Analysis completion date and time*
- Sample location/remarks





Final questions?



## Contact Water Supply Program

**EMERGENCY** after hours  
866 MDE GO TO  
1-886-633-4686

Mike McMahon  
[mmcmahon@maryland.gov](mailto:mmcmahon@maryland.gov)  
410-537-3643

Nancy Reilman  
[nreilman@maryland.gov](mailto:nreilman@maryland.gov)  
410-537-3729

Ed Brock (primary TNC contact)  
[ebrook@maryland.gov](mailto:ebrook@maryland.gov)  
410-537-3716

Marina Gopenko  
[mgopenko@maryland.gov](mailto:mgopenko@maryland.gov)  
410-537-3581

Carol Jackson (NCWS, GWR trk.)  
[carol.jackson1@maryland.gov](mailto:carol.jackson1@maryland.gov)  
410-537-3585

Ground Water Appropriations 410-537-3714/3590

[www.mde.maryland.gov](http://www.mde.maryland.gov)

1800 Washington Boulevard | Suite 450 | Baltimore, MD 21230-1718  
410-537-3000 | TTY Users: 1-800-735-2258

